

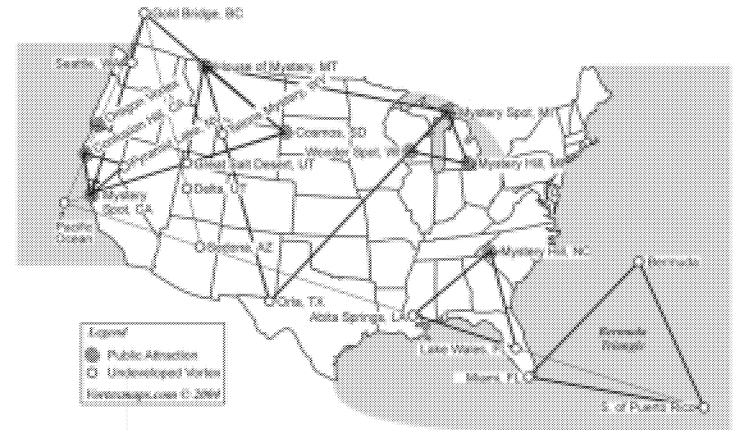
Active Vortexes in the U.S.

Nine of these active points are attractions open to the public. These active points form equal-sided triangles.

Spiral icons mark public vortex attractions. Small circles mark known active spots that have not been developed as attractions.

In the next section, we list the public attractions in the U.S. from west to east.

In each case, the aerial photo on the left shows the location of the attraction. The vortexes seem to create clusters of circles and other shapes in the vegetation, faintly visible in the photo. The photo on the right shows these shapes highlighted. Turning the book sideways so the caption is readable, North is up.



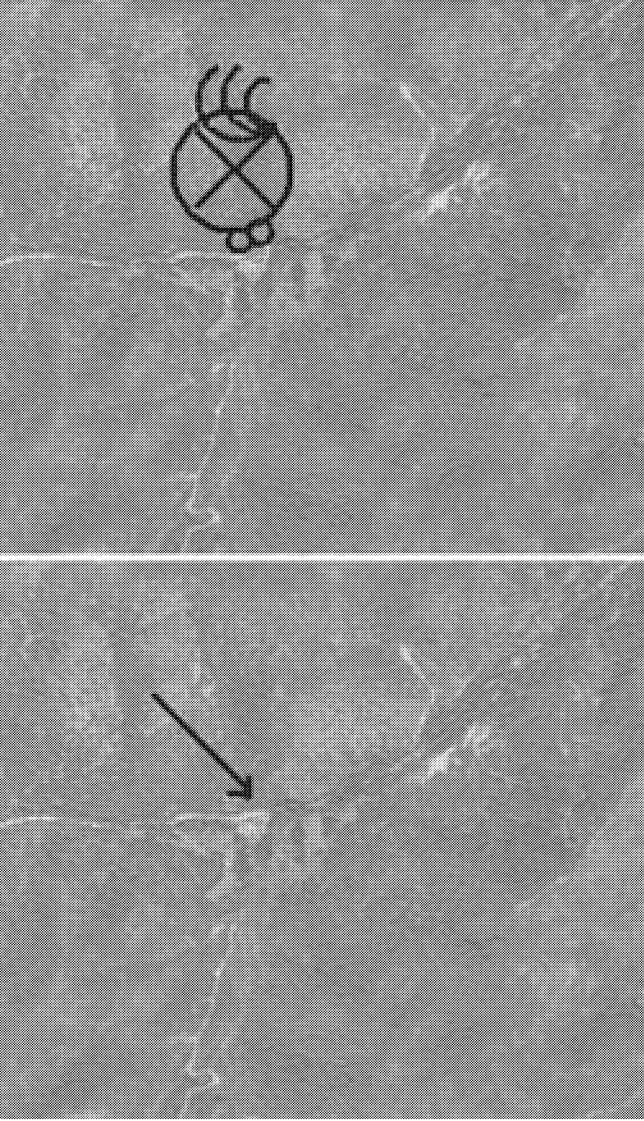
Active Vortexes in the U.S.

Nine of these active points are attractions open to the public. These active points form equal-sided triangles.

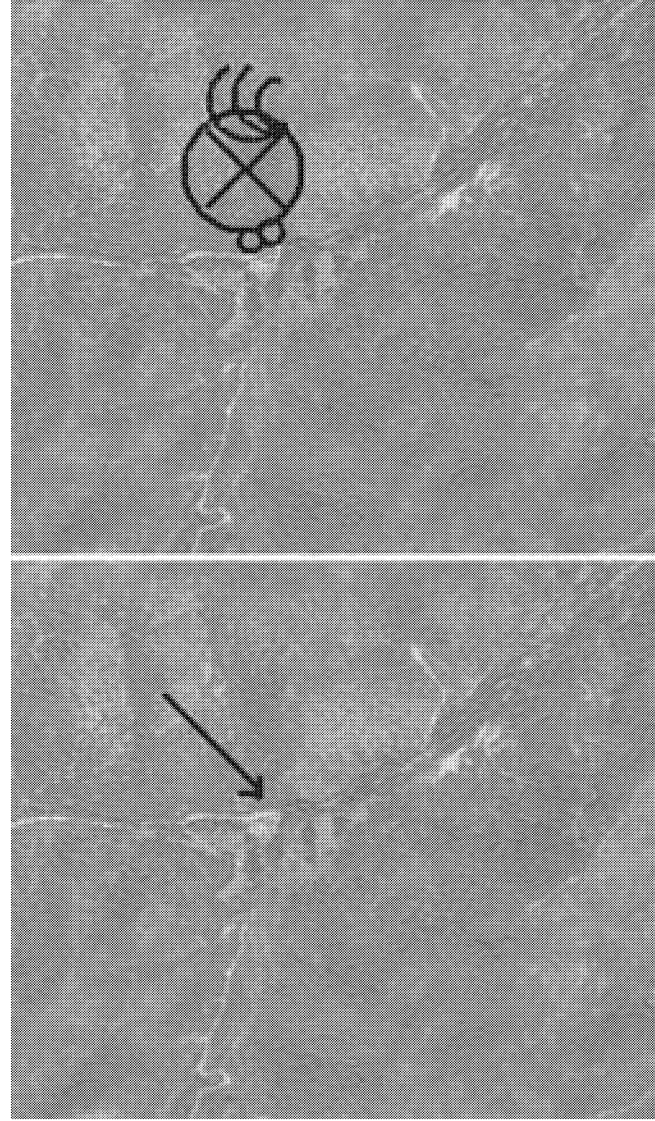
Spiral icons mark public vortex attractions. Small circles mark known active spots that have not been developed as attractions.

In the next section, we list the public attractions in the U.S. from west to east.

In each case, the aerial photo on the left shows the location of the attraction. The vortexes seem to create clusters of circles and other shapes in the vegetation, faintly visible in the photo. The photo on the right shows these shapes highlighted. Turning the book sideways so the caption is readable, North is up.



House of Mystery at the Oregon Vortex. Gold Hill, Oregon



House of Mystery at the Oregon Vortex. Gold Hill, Oregon



**House of Mystery
at the Oregon Vortex**

4303 Sardine Creek Rd.
Gold Hill, OR 97525
541-855-1543
1-877-386-7839
oregonvortex.com

Open March 1, and closes
October 31

Tour Times:
March, April, May, September, October:
9:00 A.M. –
Last tour 4:15 P.M.
June, July, August:
9:00 A.M. –
Last tour 5:15 P.M.

**House of Mystery
at the Oregon Vortex**

4303 Sardine Creek Rd.
Gold Hill, OR 97525
541-855-1543
1-877-386-7839
oregonvortex.com

Open March 1, and closes
October 31

Tour Times:
March, April, May, September, October:
9:00 A.M. –
Last tour 4:15 P.M.
June, July, August:
9:00 A.M. –
Last tour 5:15 P.M.

The House of Mystery at the Oregon Vortex is the oldest “mystery spot” in the world. It is probably the best known and deserves its “World Famous” title, having been on TV, and featured in many magazines and newspapers.

It was discovered sometime before or after 1920 by a man named John Litster, a Scottish geologist and mining engineer, who understood enough of the area through relentless research to make the genuine phenomena here a fun and educational experience. He devoted more than thirty years of his life to its development, and his short book, *Notes and Data*, is still sold at the *Vortex* gift shop.

The attraction features excellent guided tours that splice humor with scientific theory. The site opened as a roadside attraction in 1930, making it the first such attraction by at least ten years.

Indeed, the quantum, gravity, electromagnetic phenomena at the *Oregon Vortex* is REAL, and patrons of the *Oregon Vortex* get their money’s worth from the tours, which are the longest in the industry.

Coming from the north on Interstate 5 take exit 43, or if you’re coming from the south take exit 40.

The House of Mystery at the Oregon Vortex is the oldest “mystery spot” in the world. It is probably the best known and deserves its “World Famous” title, having been on TV, and featured in many magazines and newspapers.

It was discovered sometime before or after 1920 by a man named John Litster, a Scottish geologist and mining engineer, who understood enough of the area through relentless research to make the genuine phenomena here a fun and educational experience. He devoted more than thirty years of his life to its development, and his short book, *Notes and Data*, is still sold at the *Vortex* gift shop.

The attraction features excellent guided tours that splice humor with scientific theory. The site opened as a roadside attraction in 1930, making it the first such attraction by at least ten years.

Indeed, the quantum, gravity, electromagnetic phenomena at the *Oregon Vortex* is REAL, and patrons of the *Oregon Vortex* get their money’s worth from the tours, which are the longest in the industry.

Coming from the north on Interstate 5 take exit 43, or if you’re coming from the south take exit 40.



MYSTERY SPOT

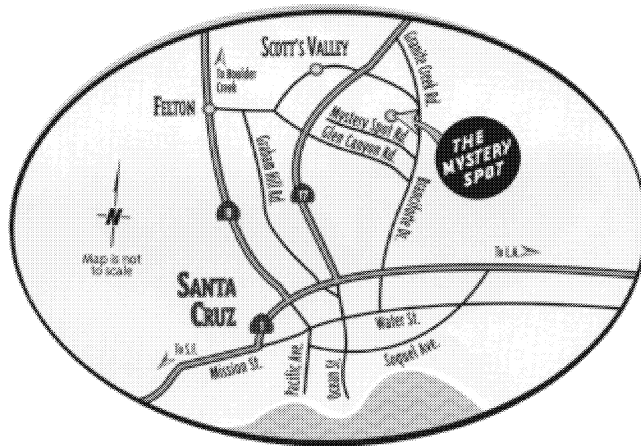
Mystery Spot

Gift shop * Ample parking for cars and RVs

465 Mystery Spot Rd., Santa Cruz, CA 95063
831-423-8897
mysteryspot.com

Open year around.

From Highway 17 between San Jose and Santa Cruz, take Glenn Canyon to Branciforte Drive, then left to the Mystery Spot.



MYSTERY SPOT

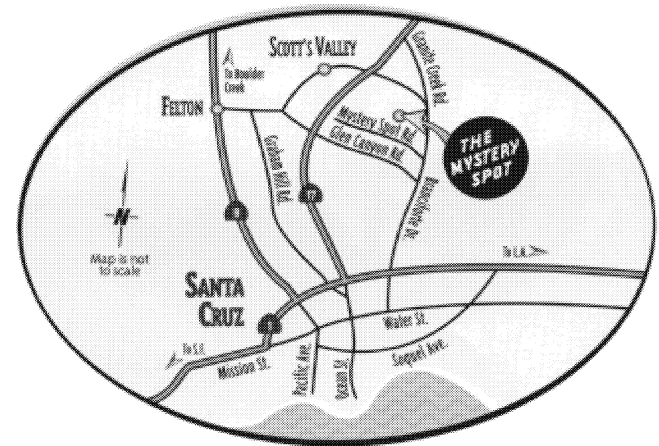
Mystery Spot

Gift shop * Ample parking for cars and RVs

465 Mystery Spot Rd., Santa Cruz, CA 95063
831-423-8897
mysteryspot.com

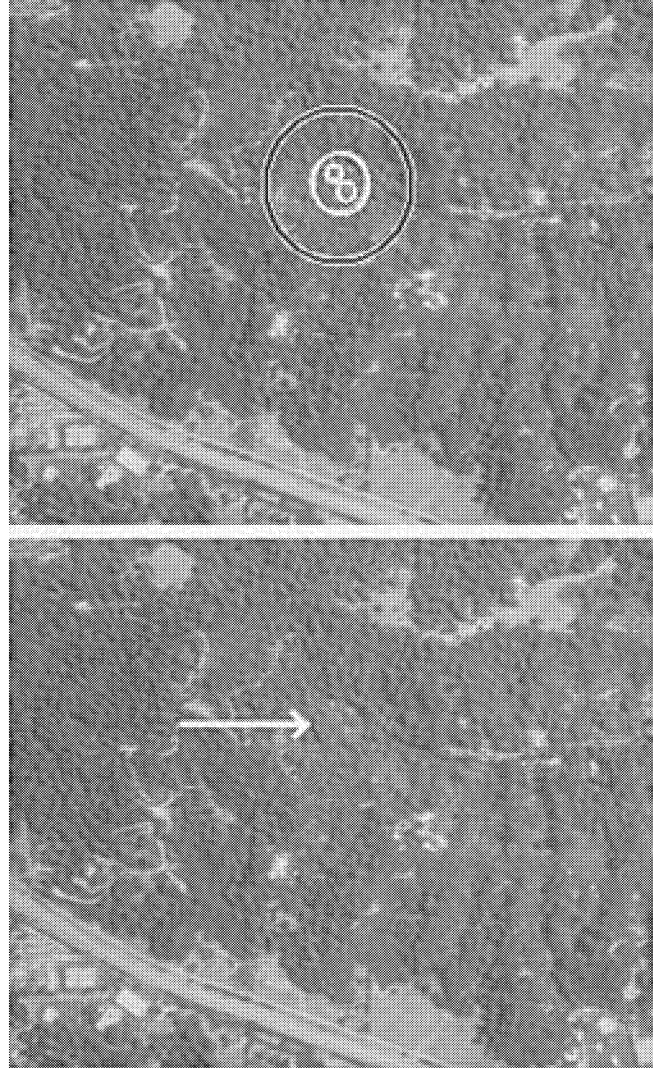
Open year around.

From Highway 17 between San Jose and Santa Cruz, take Glenn Canyon to Branciforte Drive, then left to the Mystery Spot.





Mystery Spot, Santa Cruz, California



Mystery Spot, Santa Cruz, California

This powerful vortex was discovered near Santa Cruz, California in 1939, and opened to the public in 1940. The Santa Cruz anomaly is said to be 150 feet in diameter.

The attraction uses the bulk of its tour demonstrating the true anomalies of the shrink and grow phenomenon and the twisting effects of vegetation.

To its credit it spends minimal time showing the illusions inside the slanted house.

It's been reported that as some tour groups are passing into the front yard of the crooked house they've looked back along the slanted fence and saw themselves twenty minutes in the future standing by a "T" shaped concrete platform about seventy feet away. Maybe it's only another tour group, but you never know?

The *Mystery Spot* guides put on an excellent tour that educates as it entertains.

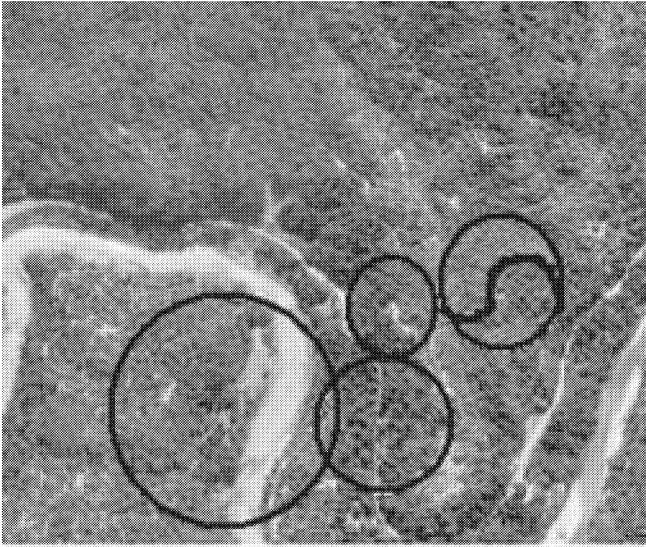
This powerful vortex was discovered near Santa Cruz, California in 1939, and opened to the public in 1940. The Santa Cruz anomaly is said to be 150 feet in diameter.

The attraction uses the bulk of its tour demonstrating the true anomalies of the shrink and grow phenomenon and the twisting effects of vegetation.

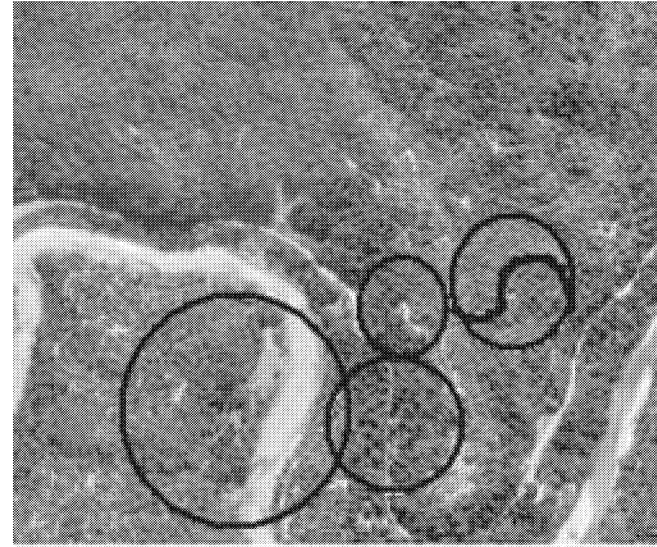
To its credit it spends minimal time showing the illusions inside the slanted house.

It's been reported that as some tour groups are passing into the front yard of the crooked house they've looked back along the slanted fence and saw themselves twenty minutes in the future standing by a "T" shaped concrete platform about seventy feet away. Maybe it's only another tour group, but you never know?

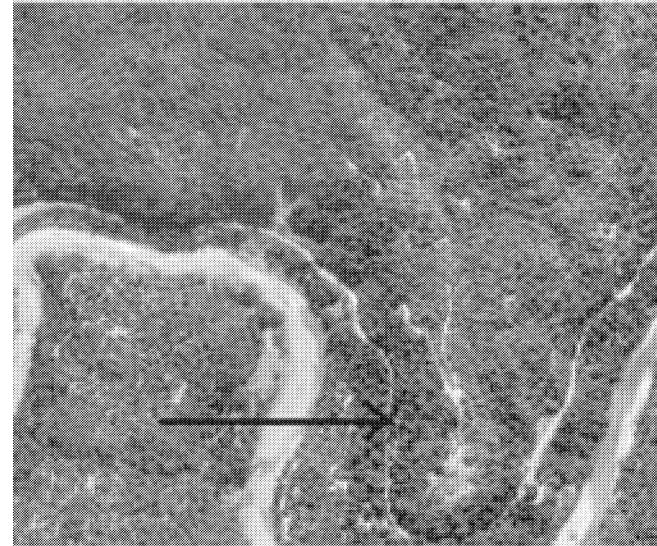
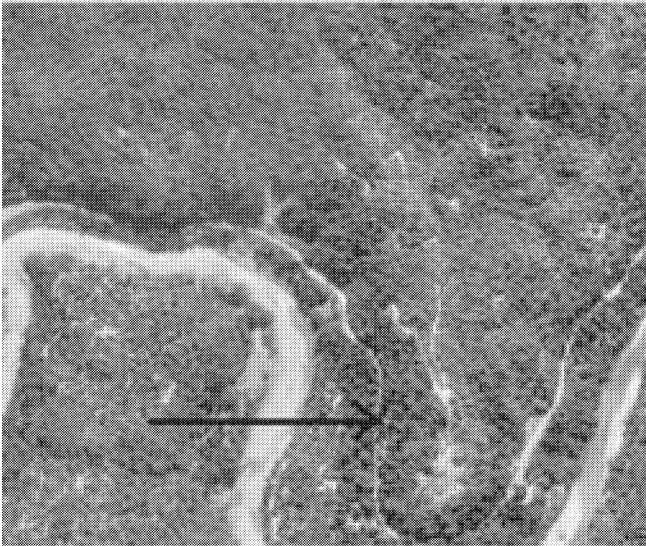
The *Mystery Spot* guides put on an excellent tour that educates as it entertains.

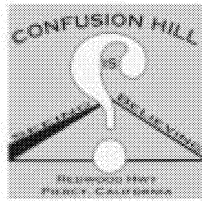


Confusion Hill, Piercy, California



Confusion Hill, Piercy, California





Campbell Bros. World Famous Confusion Hill

Confusion Hill

**Train Ride * Snack Bar * Picnic Tables
Gift Shop * Hand-crafted Souvenirs**

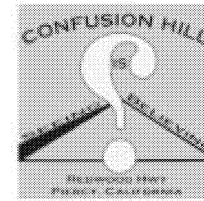
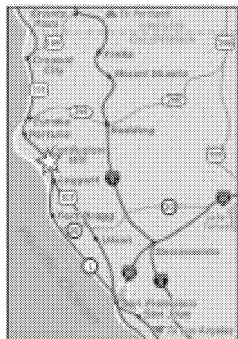
5001 N. Highway 101, Piercy, CA 95587
707-925-6456

<http://confusionhill.com>

Doug and Carol Campbell

Open 7 days a week, 365 days a year
May - September: 9 A.M. - 7 P.M.
October - March: 9 A.M. - 5 P.M.

On Highway 101, about an hour south of Eureka, halfway between the towns of Piercy and Leggett.



Campbell Bros. World Famous Confusion Hill

Confusion Hill

**Train Ride * Snack Bar * Picnic Tables
Gift Shop * Hand-crafted Souvenirs**

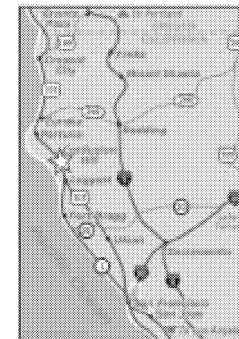
5001 N. Highway 101, Piercy, CA 95587
707-925-6456

<http://confusionhill.com>

Doug and Carol Campbell

Open 7 days a week, 365 days a year
May - September: 9 A.M. - 7 P.M.
October - March: 9 A.M. - 5 P.M.

On Highway 101, about an hour south of Eureka, halfway between the towns of Piercy and Leggett.



Known since 1999 as *The Campbell Brothers Confusion Hill*, the anomaly was first discovered and developed in 1949. As with all these attractions they have a crooked house of illusions, but the vortex is very real, and many think that the feeling there is, “friendly, forgiving”, and “light”.

Confusion Hill is located right on the coastal Highway 101 about an hour’s drive south of Eureka, California, half way between the towns of Piercy and Leggett.

It has a companion attraction; a miniature train ride through the Redwood forest to the top of a nearby hill and back. It’s said that a masked bandit, Derailing Doug, sometimes pops out from behind a Redwood tree and attempts to hold up the train, but tourists need not fear for their wallets and watches...he’s only after “purdy” things like the strong box.

The vortex is on a steep hillside so it’s difficult to measure Lines of Demarcation, but it exists within a large cluster of other vortexes, and the overall area inside the vortex is about 216 feet in diameter.

Confusion Hill features a self-guided tour with the use of signs, and is open year around.

Known since 1999 as *The Campbell Brothers Confusion Hill*, the anomaly was first discovered and developed in 1949. As with all these attractions they have a crooked house of illusions, but the vortex is very real, and many think that the feeling there is, “friendly, forgiving”, and “light”.

Confusion Hill is located right on the coastal Highway 101 about an hour’s drive south of Eureka, California, half way between the towns of Piercy and Leggett.

It has a companion attraction; a miniature train ride through the Redwood forest to the top of a nearby hill and back. It’s said that a masked bandit, Derailing Doug, sometimes pops out from behind a Redwood tree and attempts to hold up the train, but tourists need not fear for their wallets and watches...he’s only after “purdy” things like the strong box.

The vortex is on a steep hillside so it’s difficult to measure Lines of Demarcation, but it exists within a large cluster of other vortexes, and the overall area inside the vortex is about 216 feet in diameter.

Confusion Hill features a self-guided tour with the use of signs, and is open year around.

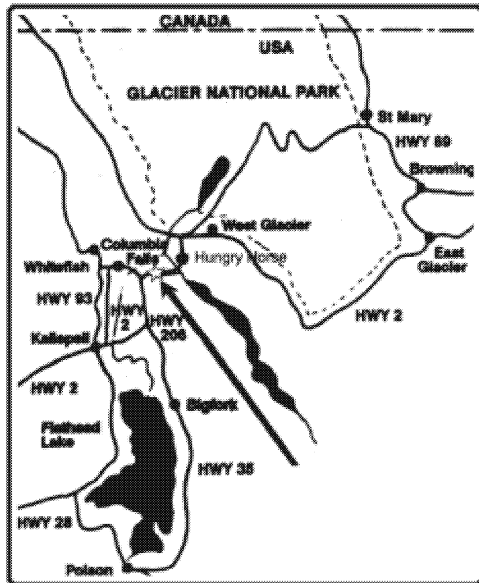
Montana Vortex & House of Mystery

Gift Shop * Picnic Spot

PO Box 1669, Columbia Falls, MT 59912
406-892-1210

Open April through October:
9:00 A.M. to dusk.

On Highway 2 between Columbia Falls and
Hungry Horse, Montana, 13 miles east of
Glacier National Park.



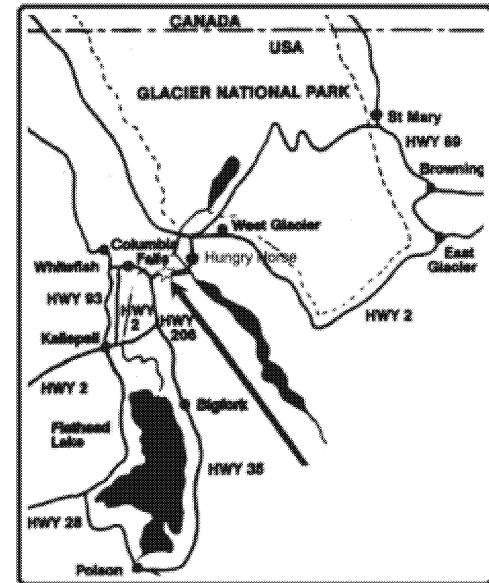
Montana Vortex & House of Mystery

Gift Shop * Picnic Spot

PO Box 1669, Columbia Falls, MT 59912
406-892-1210

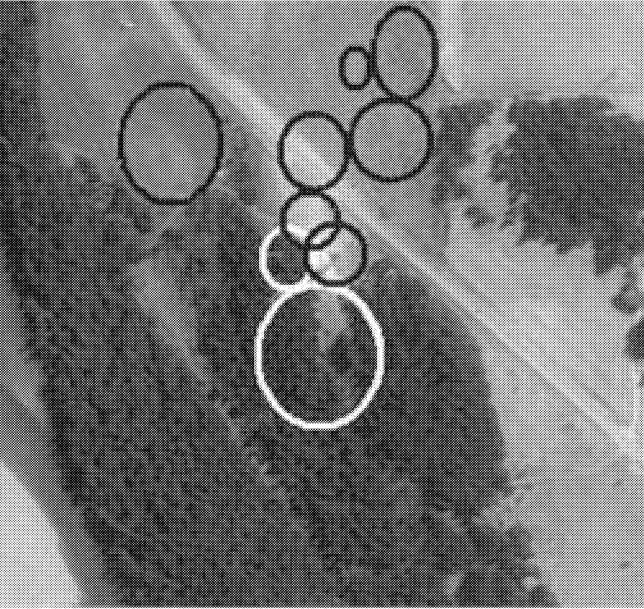
Open April through October:
9:00 A.M. to dusk.

On Highway 2 between Columbia Falls and
Hungry Horse, Montana, 13 miles east of
Glacier National Park.

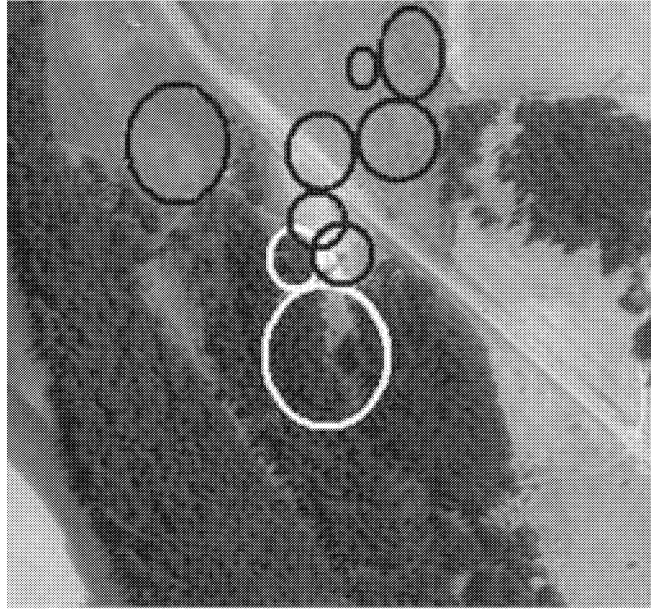




Montana Vortex, Columbia Falls, Montana



Montana Vortex, Columbia Falls, Montana



A line drawn northeast from *The Oregon Vortex* near Medford, Oregon at an angle of 39-degrees from true north, over the south-east corner of Washington, through Idaho, and into Western Montana terminates near a town called Hungry Horse. The *Montana Vortex* is nearby. It displays strong, very real phenomena and comes with the required crooked shack.

Developed in the early 1970's, this is the youngest of all the vortex attractions. They feature a self-guided tour through the grounds and shack, and the gravitational effects of the vortex are easily felt by most visitors.

This anomaly completes a giant "L" on the face of the western United States map as it is about the same distance from Seattle, as Seattle is from the *Oregon House of Mystery*, just as The Santa Cruz *Mystery Spot* is about the same distance from the *Oregon Vortex*. Along the lines of the triangles on the US map it shares common lines with several other active areas, perhaps explaining the powerful effect of its force field. Its location shares some of the gorgeous scenery that a million visitors enjoy every year while visiting *Glacier National Park*, 13 miles to the east along Highway 2.

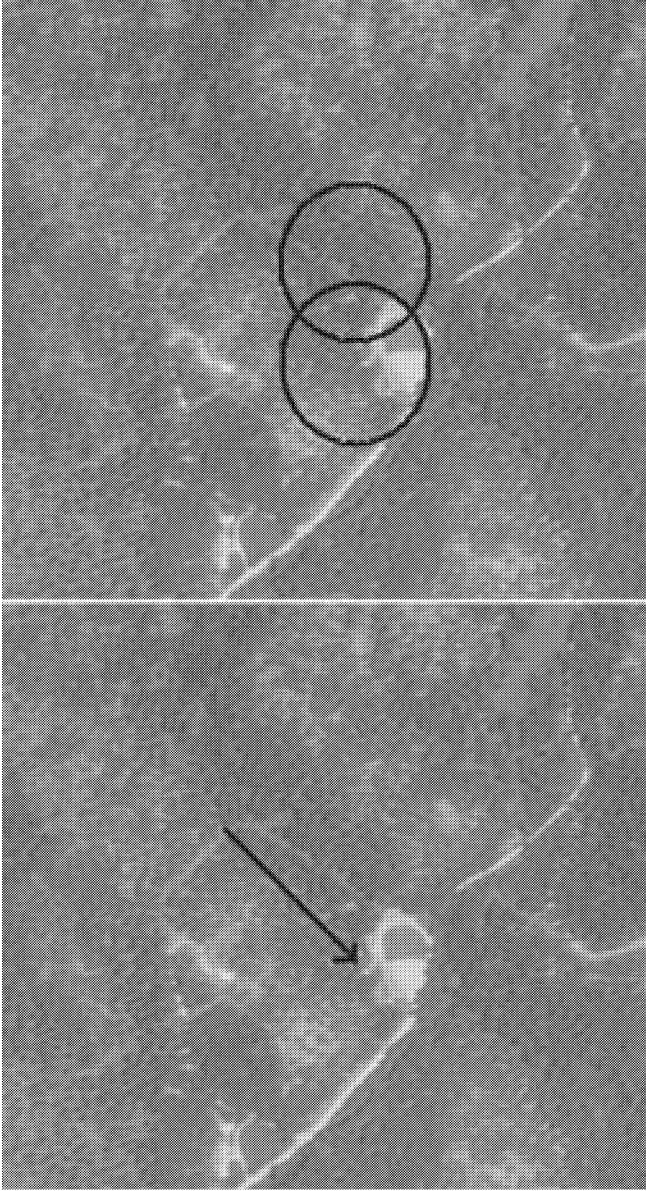
New owners Ali and Joe Hauser, are very interested in learning and sharing about the vortex phenomena.

A line drawn northeast from *The Oregon Vortex* near Medford, Oregon at an angle of 39-degrees from true north, over the south-east corner of Washington, through Idaho, and into Western Montana terminates near a town called Hungry Horse. The *Montana Vortex* is nearby. It displays strong, very real phenomena and comes with the required crooked shack.

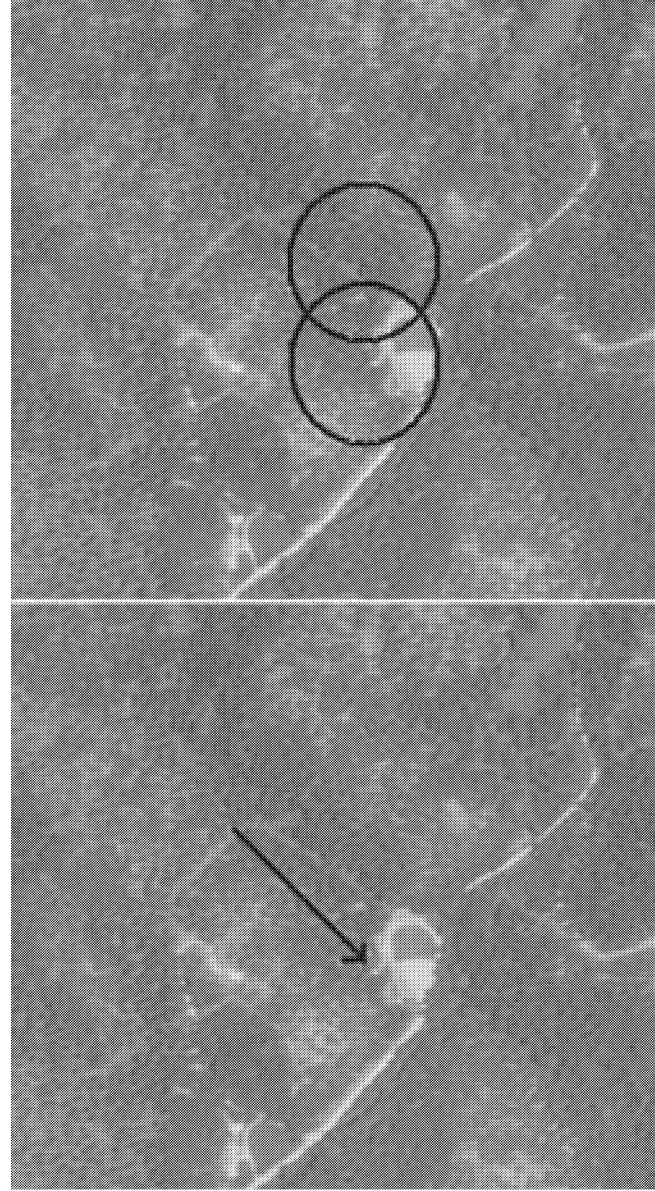
Developed in the early 1970's, this is the youngest of all the vortex attractions. They feature a self-guided tour through the grounds and shack, and the gravitational effects of the vortex are easily felt by most visitors.

This anomaly completes a giant "L" on the face of the western United States map as it is about the same distance from Seattle, as Seattle is from the *Oregon House of Mystery*, just as The Santa Cruz *Mystery Spot* is about the same distance from the *Oregon Vortex*. Along the lines of the triangles on the US map it shares common lines with several other active areas, perhaps explaining the powerful effect of its force field. Its location shares some of the gorgeous scenery that a million visitors enjoy every year while visiting *Glacier National Park*, 13 miles to the east along Highway 2.

New owners Ali and Joe Hauser, are very interested in learning and sharing about the vortex phenomena.



Cosmos, Black Hills, South Dakota



Cosmos, Black Hills, South Dakota

South Dakota



Cosmos

24040 Cosmos Road, Rapid City, SD 57702
605-343-7278 or 605-343-9802
cosmosmysteryarea.com

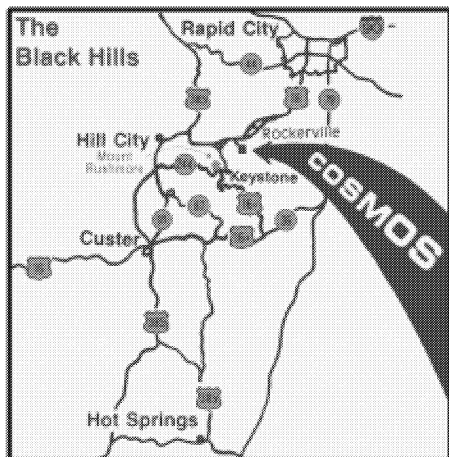
Open April to November
Summer hours:
June 1 to Labor Day
7:00 A.M. to dusk

Look for this
official highway
sign:

Off Season Hours:
9:00 A.M. to 5:00 P.M.



Off Highway
16, north of
Keystone, a
few miles
north of Mt.
Rushmore in
the Black
Hills.



South Dakota



Cosmos

24040 Cosmos Road, Rapid City, SD 57702
605-343-7278 or 605-343-9802
cosmosmysteryarea.com

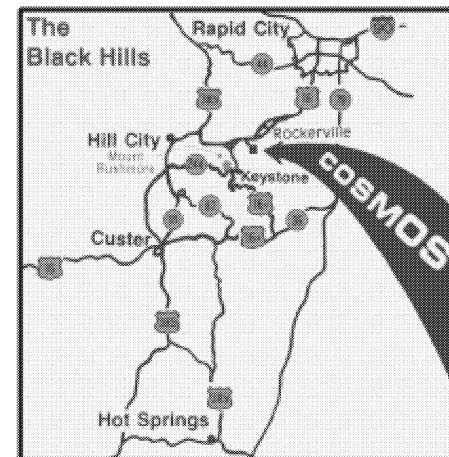
Open April to November
Summer hours:
June 1 to Labor Day
7:00 A.M. to dusk

Look for this
official highway
sign:

Off Season Hours:
9:00 A.M. to 5:00 P.M.



Off Highway
16, north of
Keystone, a
few miles
north of Mt.
Rushmore in
the Black
Hills.



Cosmos in the South Dakota Black Hills came on line in 1952. *Cosmos* begins their tours using two split concrete platforms through which the main vortex Line of Demarcation line runs, and even for a veteran of many vortex tours this first exhibition is pure dynamite. The height differences between two people is huge over a very short distance. After a visit to their crooked shack which is very well done. The tour ends having fun at a “T” shaped platform.

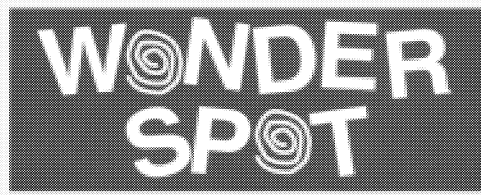
The overall “aura” of the *Cosmos* vortex seems friendly, their guides are super pleasant. There are active spots outside the tourist area; like the dandy energy node in the parking lot that is not demonstrated for tourists.



Cosmos in the South Dakota Black Hills came on line in 1952. *Cosmos* begins their tours using two split concrete platforms through which the main vortex Line of Demarcation line runs, and even for a veteran of many vortex tours this first exhibition is pure dynamite. The height differences between two people is huge over a very short distance. After a visit to their crooked shack which is very well done. The tour ends having fun at a “T” shaped platform.

The overall “aura” of the *Cosmos* vortex seems friendly, their guides are super pleasant. There are active spots outside the tourist area; like the dandy energy node in the parking lot that is not demonstrated for tourists.



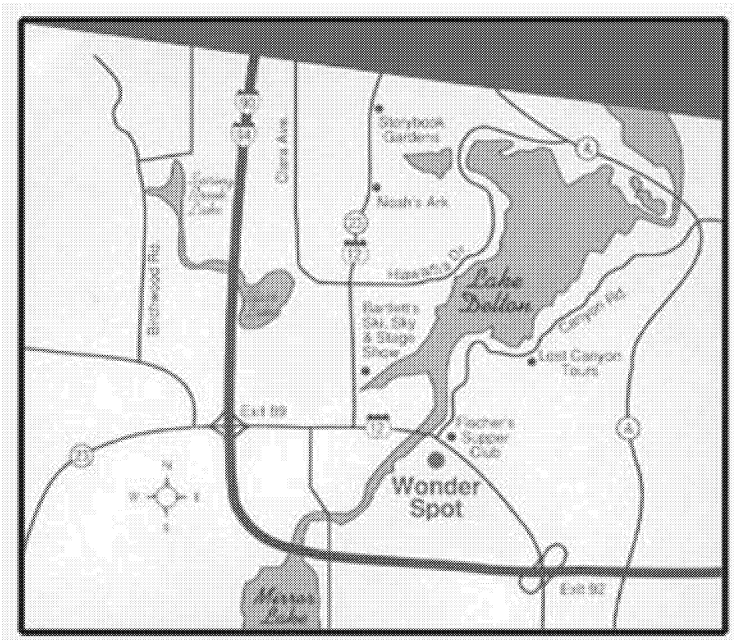


Wonder Spot

PO Box 462, Lake Delton, WI 53940
608-254-4224
explorewisconsin.com/wonderspot

Open 9 A.M. to 9 P.M., rain or shine.

Take Highway 12 S. and turn into the driveway beside Sarento's Italian Restaurant.

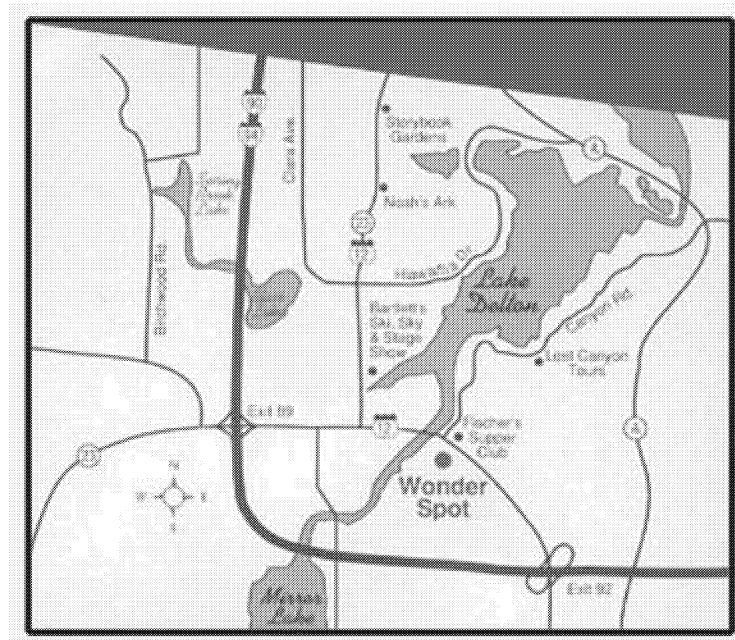


Wonder Spot

PO Box 462, Lake Delton, WI 53940
608-254-4224
explorewisconsin.com/wonderspot

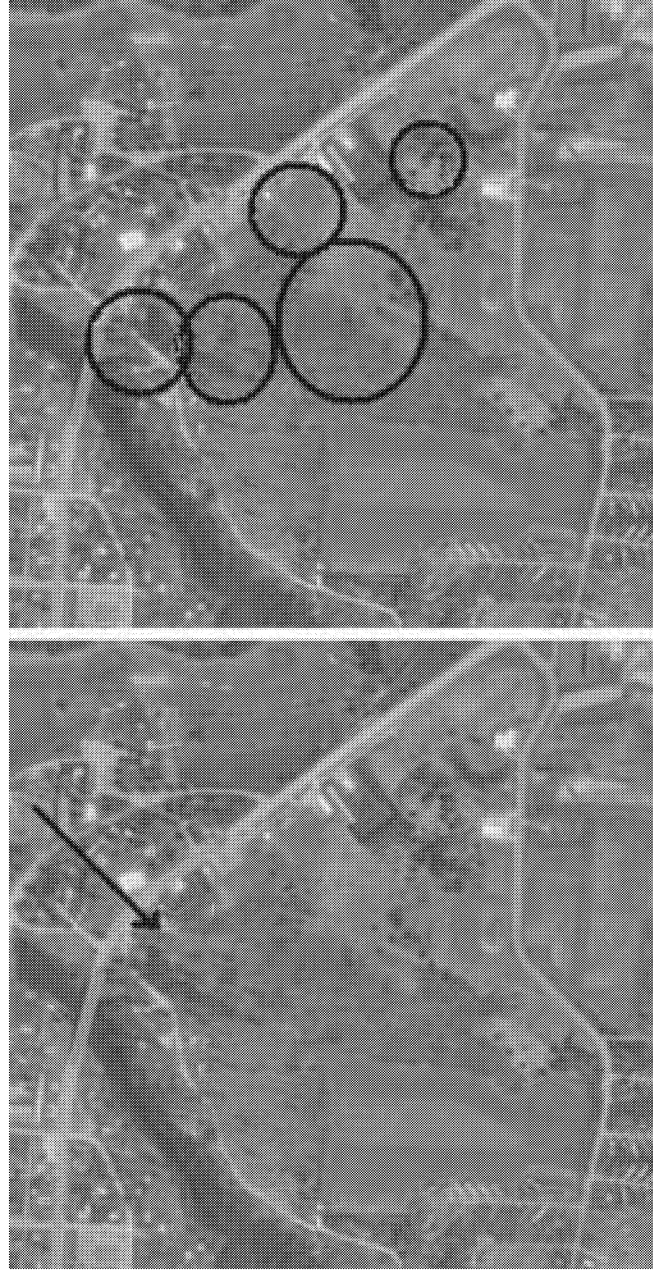
Open 9 A.M. to 9 P.M., rain or shine.

Take Highway 12 S. and turn into the driveway beside Sarento's Italian Restaurant.





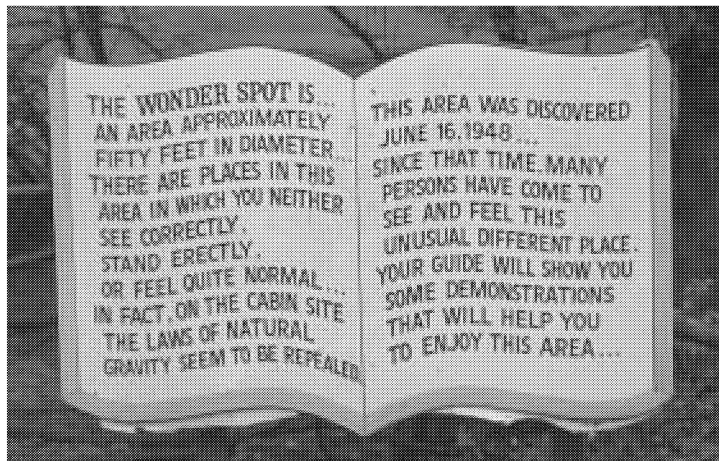
Wonder Spot, Lake Delton, Wisconsin



Wonder Spot, Lake Delton, Wisconsin

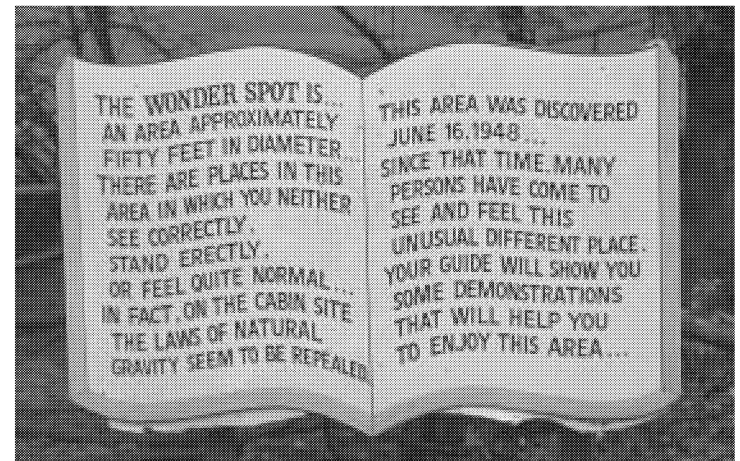
It is claimed that the *Wonder Spot's* vortex is 54 feet in diameter, but the current owner can't confirm that. It's probable he's one in a long line of owners, and knowledge of the unique qualities of his property never reached him.

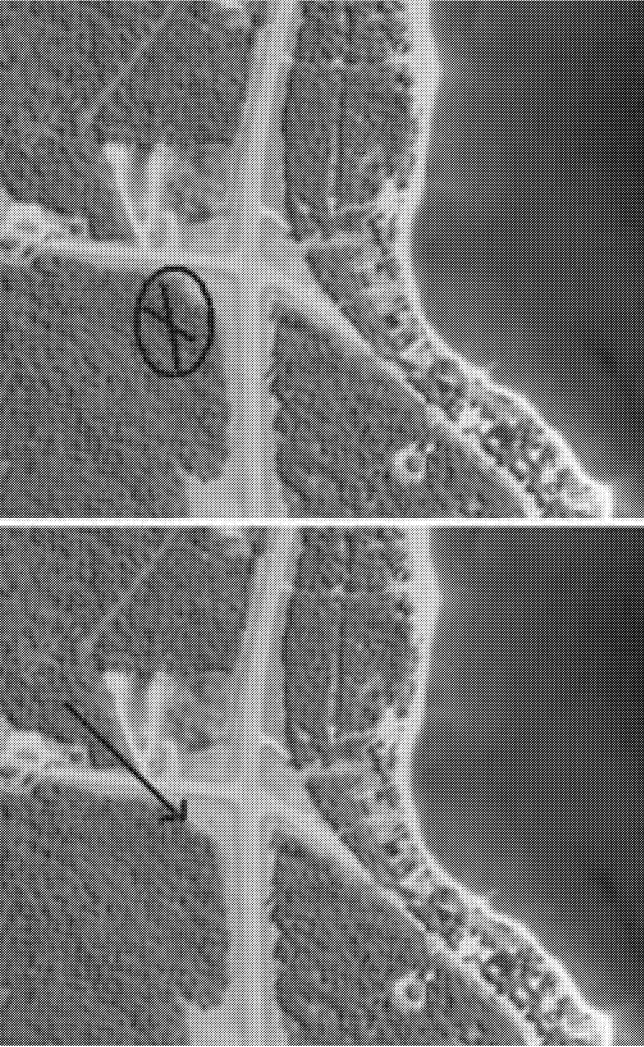
The *Wonder Spot* is certainly a genuine vortex, but the staff only demonstrates effects inside the shack. At the beginning of the tour, at the bottom of a flight of stairs, with a slow-moving stream as a backdrop, a sign in the form of an open book tells of the Spot's Wonders. At the foot of the "book" is a broken, concrete demonstration platform with the left side tilted at a steep angle to the right side. At the platform we easily detected the Line of Demarcation showing that the place is still an active vortex.



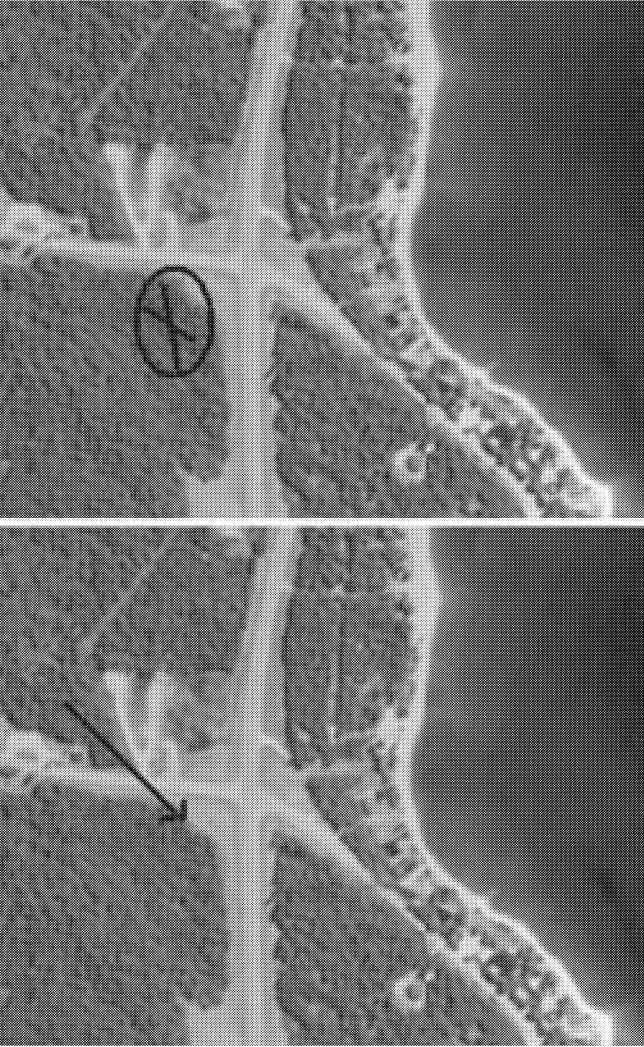
It is claimed that the *Wonder Spot's* vortex is 54 feet in diameter, but the current owner can't confirm that. It's probable he's one in a long line of owners, and knowledge of the unique qualities of his property never reached him.

The *Wonder Spot* is certainly a genuine vortex, but the staff only demonstrates effects inside the shack. At the beginning of the tour, at the bottom of a flight of stairs, with a slow-moving stream as a backdrop, a sign in the form of an open book tells of the Spot's Wonders. At the foot of the "book" is a broken, concrete demonstration platform with the left side tilted at a steep angle to the right side. At the platform we easily detected the Line of Demarcation showing that the place is still an active vortex.





Mystery Spot, St. Ignace, Michigan



Mystery Spot, St. Ignace, Michigan



Mystery Spot

**maze * miniature golf * game arcade
picnic benches**

150 Martin Lake Rd., St. Ignace, MI 49781
906-643-8322

<http://www.mysteryspot.com>

Open rain or shine (approximate dates and hours)

May 15 through June 15:

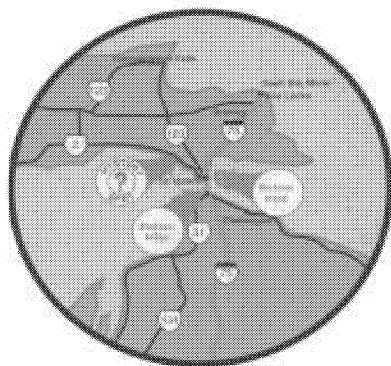
9 A.M. to 8 P.M.

June 16 through Labor Day:

8 A.M. to 9 P.M.

Labor Day through the third weekend of
October:

9 A.M. to 7 P.M.



Mystery Spot

**maze * miniature golf * game arcade
picnic benches**

150 Martin Lake Rd., St. Ignace, MI 49781
906-643-8322

<http://www.mysteryspot.com>

Open rain or shine (approximate dates and hours)

May 15 through June 15:

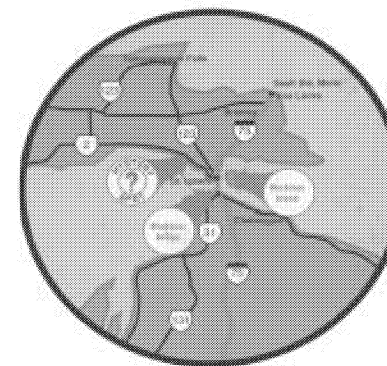
9 A.M. to 8 P.M.

June 16 through Labor Day:

8 A.M. to 9 P.M.

Labor Day through the third weekend of
October:

9 A.M. to 7 P.M.



The Michigan *Mystery Spot* is just off Highway 2 on the north side of the famed Mackinac Bridge into northern Michigan, and a little west of the city of St. Ignace.

Mystery Spot offers miniature golf. Young and old will enjoy the fence labyrinth, and the game arcade. The folks who run the *Mystery Spot* are energetic and love to shrink folks before bending their minds in the crooked shack. This is a staff that truly likes what they're doing, and there's nothing like a good shrinking when the shrinker is really into his craft.

Mystery Spot claims that their vortex is 300 feet in diameter, and if true this would be the record among roadside attractions. For the tourist, northern Michigan has a lot to offer; the greatest bridge on the North American continent, Lakes Michigan and Huron, which the bridge separates, and the wonderful laid-back welcoming attitude of its denizens.

And, of course, the *Mystery Spot*, which shouldn't be missed if one is in this great, green area of the world.

The Michigan *Mystery Spot* is just off Highway 2 on the north side of the famed Mackinac Bridge into northern Michigan, and a little west of the city of St. Ignace.

Mystery Spot offers miniature golf. Young and old will enjoy the fence labyrinth, and the game arcade. The folks who run the *Mystery Spot* are energetic and love to shrink folks before bending their minds in the crooked shack. This is a staff that truly likes what they're doing, and there's nothing like a good shrinking when the shrinker is really into his craft.

Mystery Spot claims that their vortex is 300 feet in diameter, and if true this would be the record among roadside attractions. For the tourist, northern Michigan has a lot to offer; the greatest bridge on the North American continent, Lakes Michigan and Huron, which the bridge separates, and the wonderful laid-back welcoming attitude of its denizens.

And, of course, the *Mystery Spot*, which shouldn't be missed if one is in this great, green area of the world.

Mystery Hill

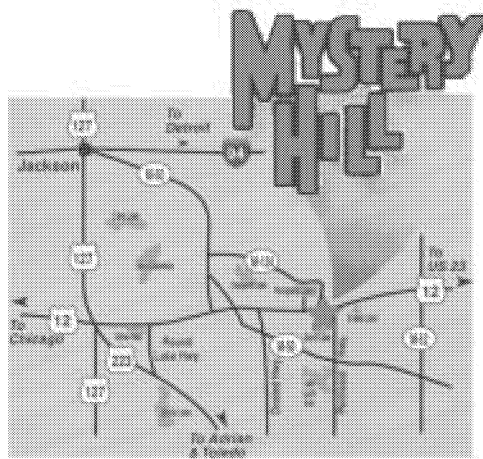
**19 hole putt-putt golf * October hauntings
radio-controlled race cars * moonwalk**

7611 U.S. Highway 12, Irish Hills, MI 49265
517-467-2517

mystery-hill.com

May and September:
Open weekends at 11 A.M.
June through August:
Open Daily 11 A.M.

A short drive from Toledo, Ohio and Detroit, Michigan, north-north-west of Adrian and east of Cambridge. Just a little east down Highway 12 from the famed Michigan Speedway. Opposite the entrance to Hayes State Park. West of Hane Rd.



Mystery Hill

**19 hole putt-putt golf * October hauntings
radio-controlled race cars * moonwalk**

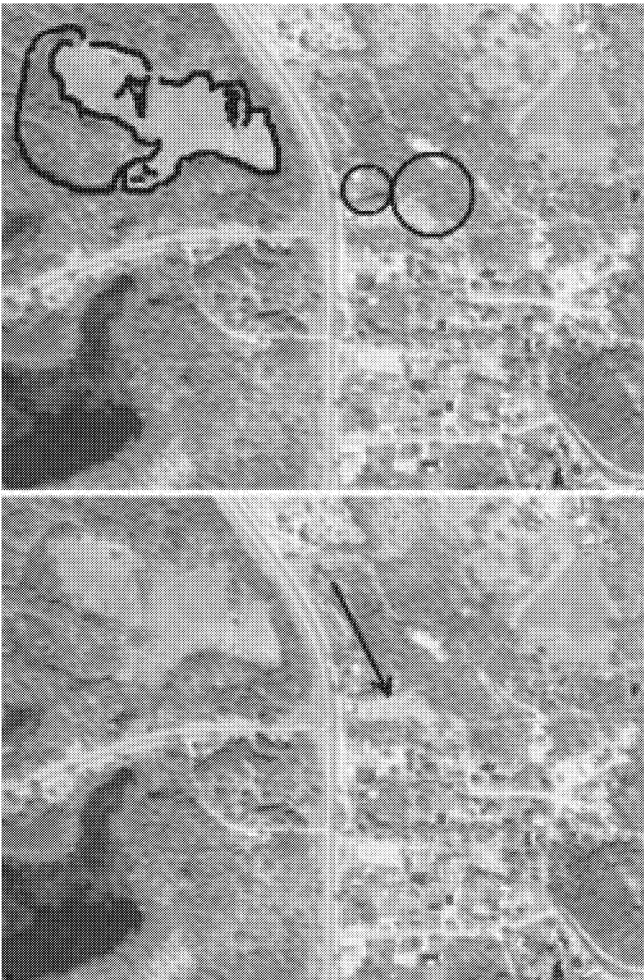
7611 U.S. Highway 12, Irish Hills, MI 49265
517-467-2517

mystery-hill.com

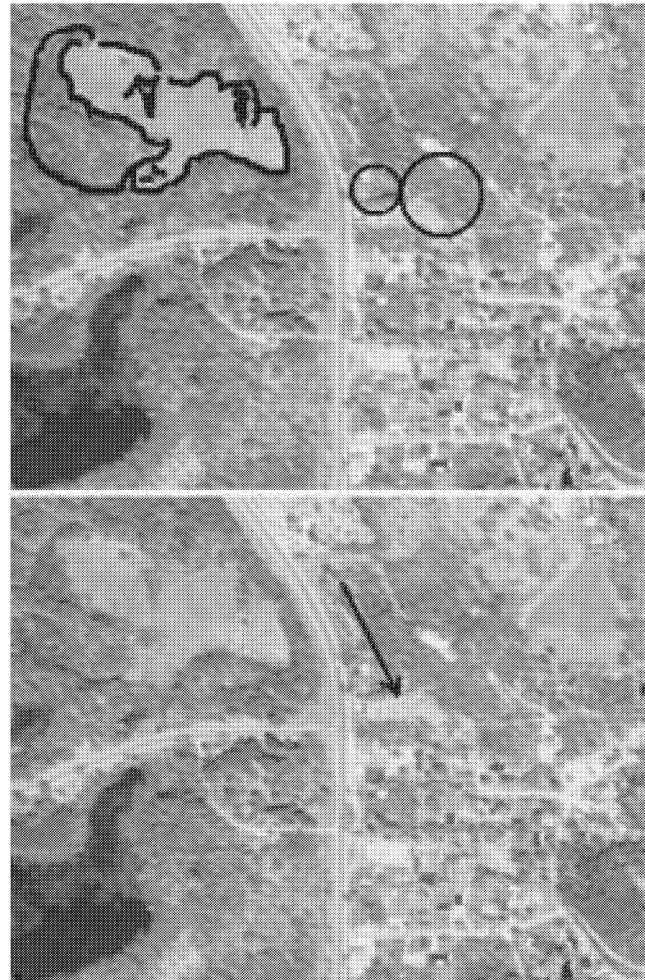
May and September:
Open weekends at 11 A.M.
June through August:
Open Daily 11 A.M.

A short drive from Toledo, Ohio and Detroit, Michigan, north-north-west of Adrian and east of Cambridge. Just a little east down Highway 12 from the famed Michigan Speedway. Opposite the entrance to Hayes State Park. West of Hane Rd.





Mystery Hill, Irish Hills, Michigan



Mystery Hill, Irish Hills, Michigan

Mystery Hill is a very clean and well-run Vortex attraction. Tourists are shown how the trees grow strangely here, and if one takes a photo of these trees from a short distance even the very leaves in the picture may offer patterns to convince the skeptic of the validity of *Mystery Hill's* vortex.

Not only does *Mystery Hill* have the usual crooked house and true vortex anomaly in the form of an excellent shrink and grow demonstration shown by courteous, well-trained guides, but they also provide a miniature golf course, and a banked oval track to race rented radio controlled model cars. There is also an inflated "Moonwalk" to keep the very young busy and happy. The souvenir shop is well stocked and conveniently laid out.

Be on the look out in their parking lot for strange happenings. In one place the vortex spills out into it providing at least one errant energy node portal. The node is not so big that your insurance company will worry about replacing your car when it slips into the next dimension, but you might want to watch your step.

Mystery Hill is a very clean and well-run Vortex attraction. Tourists are shown how the trees grow strangely here, and if one takes a photo of these trees from a short distance even the very leaves in the picture may offer patterns to convince the skeptic of the validity of *Mystery Hill's* vortex.

Not only does *Mystery Hill* have the usual crooked house and true vortex anomaly in the form of an excellent shrink and grow demonstration shown by courteous, well-trained guides, but they also provide a miniature golf course, and a banked oval track to race rented radio controlled model cars. There is also an inflated "Moonwalk" to keep the very young busy and happy. The souvenir shop is well stocked and conveniently laid out.

Be on the look out in their parking lot for strange happenings. In one place the vortex spills out into it providing at least one errant energy node portal. The node is not so big that your insurance company will worry about replacing your car when it slips into the next dimension, but you might want to watch your step.

North Carolina



**Appalachian Heritage Museum
Native American Artifacts Museum
gift shop * hand-crafted souvenirs
locally collected honey**

129 Mystery Hill Lane,
Blowing Rock, NC 28605
828-264-2792
www.mysteryhill-nc.com

Open year round, 7 days a week
June through August:
Monday thru Sunday
9:00 A.M. – 8:00 P.M.
September through May:
Monday thru Sunday
9:00 A.M. – 5:00 P.M.

Halfway between the towns of Blowing Rock and Boone on State Highways 221/321; north of Blue Ridge Parkway.
From the town of Blowing Rock, take Highway 321 north approximately four miles. Mystery Hill is on the left.
From Boone, take US Highway 321 south approximately four miles. Mystery Hill is on the right.
From the Blue Ridge Parkway, at mile marker 291 exit off the Parkway. Take Highway 321 north approximately 1.5 miles. Mystery Hill is on the left.

North Carolina



**Appalachian Heritage Museum
Native American Artifacts Museum
gift shop * hand-crafted souvenirs
locally collected honey**

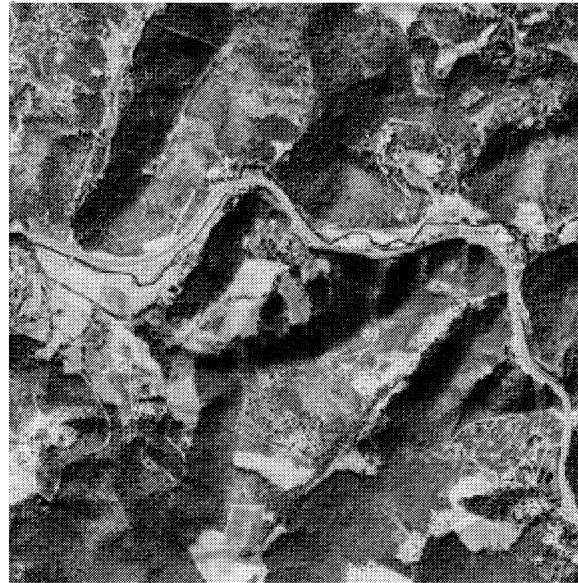
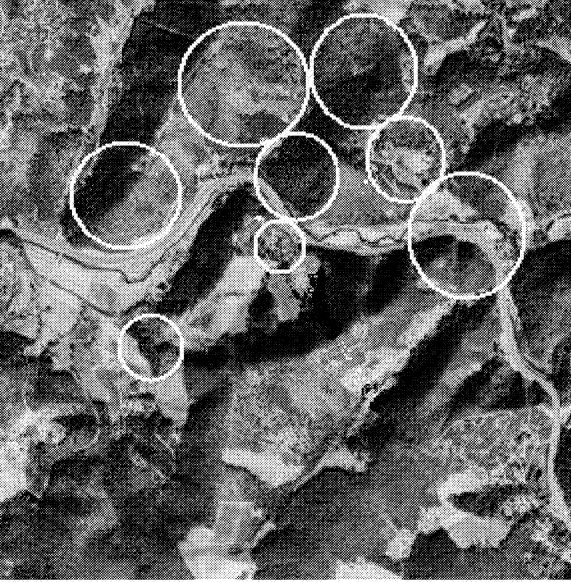
129 Mystery Hill Lane,
Blowing Rock, NC 28605
828-264-2792
www.mysteryhill-nc.com

Open year round, 7 days a week
June through August:
Monday thru Sunday
9:00 A.M. – 8:00 P.M.
September through May:
Monday thru Sunday
9:00 A.M. – 5:00 P.M.

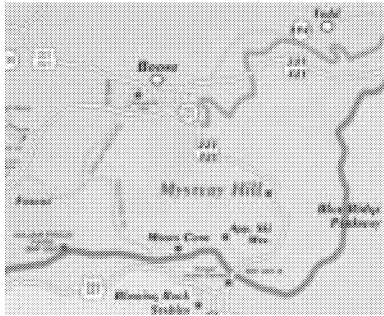
Halfway between the towns of Blowing Rock and Boone on State Highways 221/321; north of Blue Ridge Parkway.
From the town of Blowing Rock, take Highway 321 north approximately four miles. Mystery Hill is on the left.
From Boone, take US Highway 321 south approximately four miles. Mystery Hill is on the right.
From the Blue Ridge Parkway, at mile marker 291 exit off the Parkway. Take Highway 321 north approximately 1.5 miles. Mystery Hill is on the left.



Mystery Hill, Blowing Rock, North Carolina



Mystery Hill, Blowing Rock, North Carolina

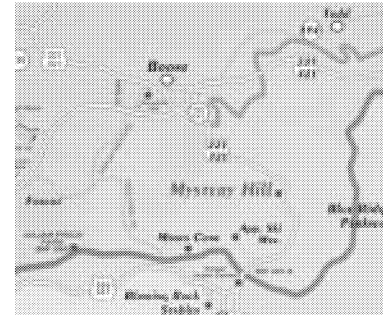


With its fine gift shop, and Appalachian Heritage Museum, *Mystery Hill*, North Carolina is a well-laid out multifaceted attraction. One of those facets is an extremely active

vortex that some say may be caused by the large mineral deposits in the area. The property was once an apple farm. In the 1940's it was noticed that the apple trees grew leaning against the direction of the prevailing winds in the area. Even the New River across the road defies convention by flowing north.

One day the orchard owner, William Hudson, noticed that the pair of identical twins he'd hired to run the cider press didn't look to be the same size on the press platform. He knew full well they should have looked the same! When he switched them around the big twin got small and the small twin got big!

He'd read something about this sort of thing in *Life Magazine*, so in 1948 he traveled to the Santa Cruz *Mystery Spot*, and after returning home to Blowing Rock, he began developing his own very real vortex.



With its fine gift shop, and Appalachian Heritage Museum, *Mystery Hill*, North Carolina is a well-laid out multifaceted attraction. One of those facets is an extremely active

vortex that some say may be caused by the large mineral deposits in the area. The property was once an apple farm. In the 1940's it was noticed that the apple trees grew leaning against the direction of the prevailing winds in the area. Even the New River across the road defies convention by flowing north.

One day the orchard owner, William Hudson, noticed that the pair of identical twins he'd hired to run the cider press didn't look to be the same size on the press platform. He knew full well they should have looked the same! When he switched them around the big twin got small and the small twin got big!

He'd read something about this sort of thing in *Life Magazine*, so in 1948 he traveled to the Santa Cruz *Mystery Spot*, and after returning home to Blowing Rock, he began developing his own very real vortex.