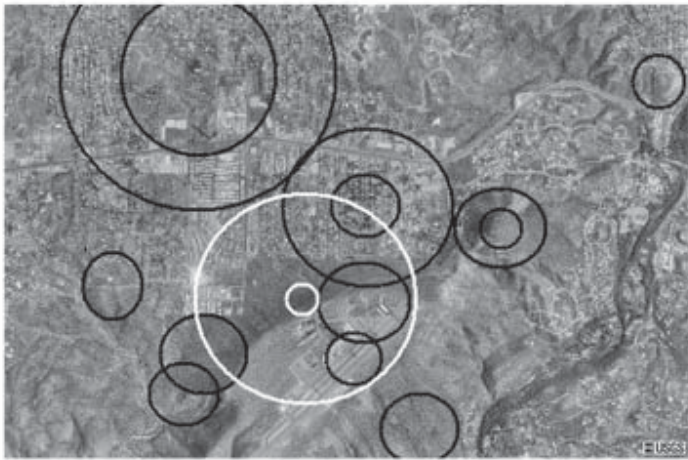


**Primary Active Areas:
Sedona, Arizona
Pyramid Lake, Nevada
Orla, Texas**

Sedona, Arizona

Vortexes come in different sizes. The smaller ones that have grown in roadside lore almost always show up in clusters, and so do some of the larger ones; like Sedona, Arizona, long known as a vortex mecca among certain folks who are drawn to them for psychic benefit. The vortexes here, some of which are easily made out in the aerial photo, aren't known for the quantum effects of the roadside attraction variety, but are sought more for the feelings they engender. They are prized as wonderful Earth spots in which to meditate, for instance, not to shrink and grow.

Vortexes also come in different angles. The spheroid roadside type generally can be located as circles flat on the ground, and even though Sedona's vortexes are also found in this configuration, there is one minor difference; their spheres are tilted 90-degrees off from their cousins. Think of the planet Earth suddenly laying over on its side, so to speak, its axis



Identical air photos of city of Sedona, Arizona. The circles highlighted in the bottom photo can be distinguished in the upper photo.

now spinning at a right angle to the position of where its equator once was. Evidently, because of this contrary spin direction, Sedona's vortexes seem to have an effect on people that

is different from the roadside attraction variety, an effect attending more to the spiritual aspect of humans than the physical.

Different vortexes are detected by different methods, which is why those who frequent the roadside type tend to think wrongly that Sedona is a dud. Sedona was first proclaimed a true vortex area because of the obvious sign of circles on the ground in aerial photographs. Later, a more esoteric method confirmed the photographic evidence. There can be more than one detection method, and one of those is map dowsing. Because of its eyebrow raising, subjective nature, map dowsing isn't relied on nor bragged on, but in the hands of a skilled practitioner results do tend to confirm other methods.

One of the reasons folks don't put a great emphasis on the art of finding information by dangling an object over a printed map, apart from the obvious, is that different dowsers will swear by different impliments. One might use a crystal hanging on a string as a pendulum weight, or anything else a bit cryptic or arcane, like a piece of gold. Much to his own surprise, even chagrin, Nick found he could map dowse, and his tool of choice is a simple ceramic, refrigerator magnet glued to the end of a string. He found by dowsing various spin lines inside the Oregon Vortex that a naked magnet finds circular, concentric lines of force, a magnet wrapped in a piece of thin, non fer-

rous metal like aluminum or brass finds straight “Ley” lines, and the two magnets together locate spiral lines.

The straight lines, he later discovered generally signify an aspect of a vortex, or a vortex itself that is tipped 90 degrees to the roadside type, and this is how his implement describes the entire Sedona area.

Another aspect of Sedona is that it doesn't seem to be connected to other Sedona type, orthogonal vortexes, unless it be to those at much greater distances than the more secular mystery areas. In terms of its magnetic signature it seems to be a stand-alone phenomenon.

Orla, Texas

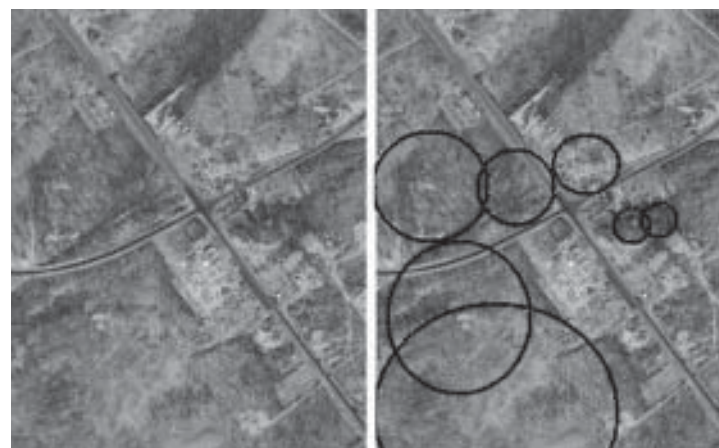
There are other stand-alone vortex clusters, one of which is found just below New Mexico's southern border in Texas. The place has a name on maps though drivers on either north/south route 285, or east/west route 652 shouldn't blink if they want to see it. Small though it is, Orla, Texas is special in the lore of vortex hunters.

Of the three basic magnet pendulums discussed, Orla can be located on maps using all three, something that does not happen with any of the other vortexes discussed in this book.

Orla in Spanish means border or fringe, and in fact it seems to be just that in the way it defines almost every other US vortex. It is

certainly on the fringe, seeming to geometrically anchor many other known vortexes but it could also be called *gozne*, or hinge because everything seems to swing from its position on the map. Staying with Spanish, it could have been named, *gorron*, or pivot, or *eje*, axis (not to be confused with eye).

The aerial photo is absolutely unique in



Intersection of Texas Highway 285 and 652.

that vortex ground effects can be seen in the quadrants formed by the intersection of two highways. By looking both ways from the intersection on 652 it almost looks as if the design engineers put two unnecessary bends in the road just so the X or plus sign created by it could frame different shadowy anomalies. In the northwest section the faint impression of concentric rings fill the quadrant. In the NE and SW sections are lesser impressions, but the blockbuster footprint of Orla's vortexes is

starkly evident in the southeast quadrant. It appears as a thick figure eight, or infinity symbol, ∞ . The sweeping, fat line that forms it is easily seen crossing over itself just as it would if one was writing the number 8. In magnetics, and also in vortex discovery this sign is closely aligned with what is known as the *Bloch Wall*, or that part of a tornado vortex effect where the spiraling clockwise spin does a little dance in order to leave spinning counterclockwise. The ∞ is encircled by many dim concentric rings.

These images are taken from the US Government's USGS postings. They have not



been altered except to editorially frame them to fit the page. Vortexes are real. Their effects impinge on the environment. Readers can make any determination they wish as to how this happens, or why.

Pyramid Lake, Nevada

Located about 30 miles north of Reno/Sparks, Pyramid lake takes up most of the Pyramid Lake Indian Reservation. The area is special, not only to its Native American owners but to a certain segment of new agers who gather there once a year in a festival known as *The Burning Man*.

Just as Sedona is found using a different version of detection method than the roadside attractions, and Orla, Texas is found using all three detection methods, Pyramid Lake reveals itself using two methods. The naked magnet, and the metal wrapped magnet both react to this area of the map. This large area also exists as a culmination point for two different vortex phenomena. First, it is in the northwest section of a large corona that swings around a vortex that has its center close to highway 376 near the community of Carvers, which is about halfway between the towns of Austin and Tonopah, Nevada.

This vortex is 270 miles in diameter. Its corona is 45 miles across, and as an aside that will interest some, the outer corona line 315 miles away passes through the town of Pahrump, west of Las Vegas. Pahrump, many will recognize is the home of Art Bell, the beloved late-night radio talk show host, who at the time of this writing is hosting the weekend component of the *Coast to Coast A.M.* ra-



Most of the entire state of Nevada is covered by one type of Fibonacci vortex.

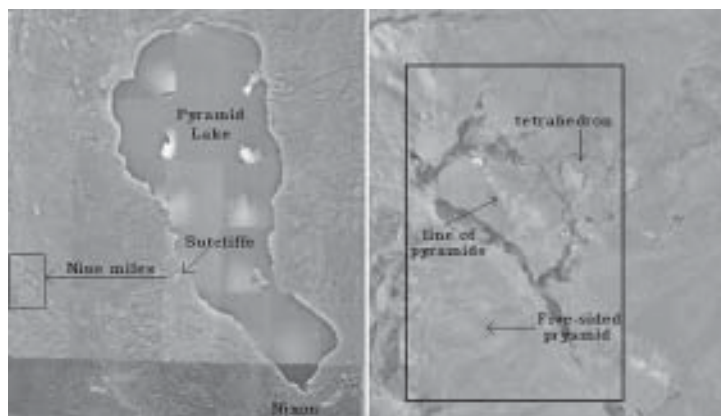
dio show. During his shows heard just before this writing he was talking about the massive short wave antennas in his back yard and how

they are inexplicably attracting huge amounts of electrical voltage right out of the air. A line started from the main demarcation at the south end of Pyramid lake and drawn southeast off the diameter line at precisely 19.5 degrees ends at the town of Pahrump, Nevada, which is also exactly on the outer corona line. Nineteen and a half degrees, found in a tetrahedron, and originating from a “pyramid” Lake, may cause speculation that perhaps Art’s excess voltage may be in some way connected to all this odd geometry?

The second aspect of vortex phenomenon regarding Pyramid Lake is that it is the end point of a gigantic spiral that starts near the center of the State of Washington, expands out into the Pacific Ocean, reencounters land in British Columbia, Canada, passes over the outer ring of a large vortex near Carpenter Lake, BC and the town of Gold Bridge, then near the *Montana Vortex*, before it continues on to Pyramid Lake.

The lake is also the end point and starting point for a pair of large spirals that are connected to the Santa Cruz, California, *Mystery Spot*. The spirals form a gigantic ∞ between Monterrey Bay, CA and Pyramid lake. These spirals are found by the astonishing act of simply finding certain names of places on ordinary road maps. This information is discussed in starkly specific detail in the book, *The Golden Vortex*, by Nick Nelson.

There is yet one more ∞ involved with Pyramid Lake as well as Orla, but in the aerial photo it doesn't stand out. It exists as a counter rotating figure eight, labeled 8 and 13, its center butting up to both sides of the vortex demarcation, a variation of which is found in one form or another in all Fibonacci vortexes.

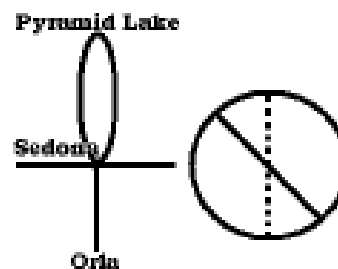


Pyramid Lake on the left, and on the right the inset at a larger scale showing the line of pyramids described in the text.

The ∞ doesn't show in the photos, but what does appear is a fat, flimy line down the middle of a smaller, half-dry lake nine miles west of the community of Sutcliffe, Nevada on the edge of the Lake. In close-up views the "line" appears like a nondescript fog, but in a view from farther out structures seem to appear out of the fog. This line of things resemble pyramids! There even seems to be a five-sided form reminiscent of the pyramid shape seen near the "face" on Mars, in an area of that planet

dubbed, *Cydonia*. Borrowing from Plato, Richard C. Hoagland on his website, and his books should be consulted for the significance of the tetrahedron and its 19.5 degree importance. He also lists Cydonia's latitudinal position on Mars as 41 degrees, and Earth's latitude of Pyramid Lake is plus 40!

Another observation about these three points on a map is that they are all on a straight



The three primary active areas depicted as parts of the Egyptian 'ankh'. Side view on left, and top view on the right.

line one with the others, Sedona in the middle. Another straight line associated with Sedona extends outward from the area to form an X. This line seems to terminate to the south at the head of the Gulf of California, while the northern line stops a little beyond the four corners in the area of

Mesa Verde. One can only wonder if this is significant in the mysterious disappearance of the Anascasi indian tribe who once peopled Mesa Verde a little south of Durango, Colorado? No one knows what happened to the Anascasi, but the famous western writer, Louis L'amour, in the plot of one of his last novels, *The Haunted Mesa*, speculated that the indians escaped the Conquistadors by disap-

pearing through a portal between worlds; a kind of mini black hole ... a vortex.

Looking at the X created by these two straight lines, some see a cross, others think maybe an Egyptian Ankh is depicted. The significance of either is as mysterious as any of the other phenomena associated with the lore of these quantum vortexes.